

# Handheld douche wand and trigger spray hose assemblies – Backflow prevention requirements

**Consumer, Building and Occupational Services  
Plumbing Standards, Technical Regulation Unit**

## Purpose

The purpose of this Technical Note is to provide clarification on the backflow protection requirements related to installation of handheld douche wands and trigger sprays that are connected to a drinking water supply via a hose assembly (see image below).

- The backflow prevention requirements related to Bidet Douche Seat installations can be found in this Regulatory Note:
  - [Bidet Douche Seats – Backflow prevention requirements.](#)

## Background

These devices are typically installed adjacent to the toilet suite and enable the user to clean themselves while seated upon the pan. The product is connected to the cistern isolation valve or to a secondary isolation valve. Some models also require a separate heated water connection.

Both during use and in the common event where the handpiece is dropped into, or indeed left in the toilet pan, the product may be subject to back-siphonage conditions that will contaminate the drinking water supply.



*Handheld douche sprays represent a clear cross-connection hazard.*

## Regulatory requirements

The National Construction Code Volume 3 – Plumbing Code of Australia (PCA) 2022 details the mandatory requirements for plumbing systems. The PCA 2022 came into effect in Tasmania on the 1 May 2023.

Cross-connection hazard ratings and relevant Deemed-to-Satisfy (DtS) solutions are detailed within the PCA - Specification 4I.

PCA S4I C4(3)(h) - Handheld douche sprays are High Hazard devices for the purpose of Individual Protection.

## WaterMark requirements

Handheld hose douche sprays must be manufactured in accordance with AS/NZS 3718 and hold a current WaterMark license number 074815. A plumber is not permitted to install any device to a drinking water supply that does not hold the WaterMark license.

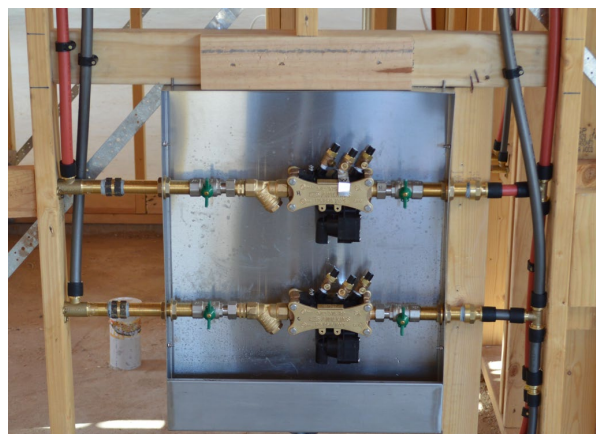


To ensure compliance and currency, a plumber is obliged to access the WaterMark website page <https://watermark.abcb.gov.au> and verify by searching under license number, model number or manufacturer.

## Installation requirements

Handheld douche sprays are High Hazard devices and as such an appropriate backflow prevention device (eg RPZD) must be selected and installed at the inlet to the product in accordance with AS/NZS 3500.1 Section 4.

For models that require a heated water supply connection, the backflow prevention solution must be in duplicate with valves adjacent to the product connection point (see image).



*Hand held douche sprays with a heated water supply require duplicate High Hazard backflow protection.*

Temperature control requirements of such devices must be compliant with the PCA B2D5 and all related provisions.

## Who can install?

In accordance with the *Occupational Licensing (Plumbing Work License Classes) Determination 2018*, hand held douche sprays and associated backflow devices must only be commissioned by a licensed certifier plumber who holds a license endorsement in backflow prevention.

**Department of Justice**  
Consumer, Building and Occupational Services

**Phone:** 1300 654 499

**Email:** [cbos.info@justice.tas.gov.au](mailto:cbos.info@justice.tas.gov.au)

**[www.cbos.tas.gov.au](http://www.cbos.tas.gov.au)**



## Boundary containment protection

- Where a hand held douche spray is to be installed, the following applies in respect to Boundary Containment Protection:
- Class 1, 2, 7a and 10 Buildings – the site is deemed to be Low Hazard as per provisions within the PCA S41C6. However;
- Plumbers are required to confirm boundary containment protection requirements with TasWater prior to job commencement.

- If TasWater require the existing boundary device to be raised to a higher protection level, then the installation must comply with the PCA and AS/NZS 3500.1 and all valves tested annually in accordance with AS/NZS 2845.3

## Category of work

The provision of new backflow prevention devices is Category 4 Permit work as described in the *Director's Determination – Categories of Plumbing Work*.

## Document development history

Version	Application Date	Sections amended
1.0	9 August 2023	Original release

This document has been produced and published by the Consumer, Building and Occupational Services Division of the Department of Justice. Although every care has been taken in the production of the work, no responsibility is accepted for the accuracy, completeness, or relevance to the user's purpose, of the information. Those using it for whatever purpose are advised to verify it with the relevant government department, local government body or other source and to obtain any appropriate professional advice. The Crown, its officers, employees, and agents do not accept liability however arising, including liability for negligence, for any loss resulting from the use of or reliance upon the information and/or reliance on its availability at any time.

For office use only DOC/23/44784 Published August 2023.

**Department of Justice**  
Consumer, Building and Occupational Services

**Phone:** 1300 654 499

**Email:** [cbos.info@justice.tas.gov.au](mailto:cbos.info@justice.tas.gov.au)

**[www.cbos.tas.gov.au](http://www.cbos.tas.gov.au)**

