

Firewall Penetrations

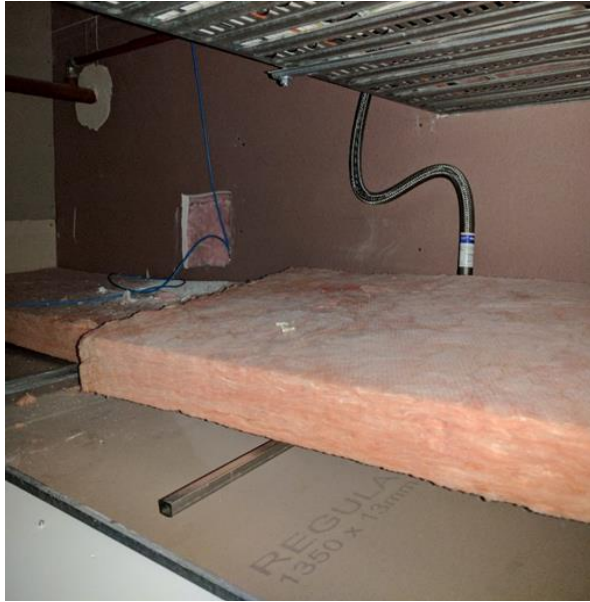
Presented by - Darren Latta
Electrical Safety Officer

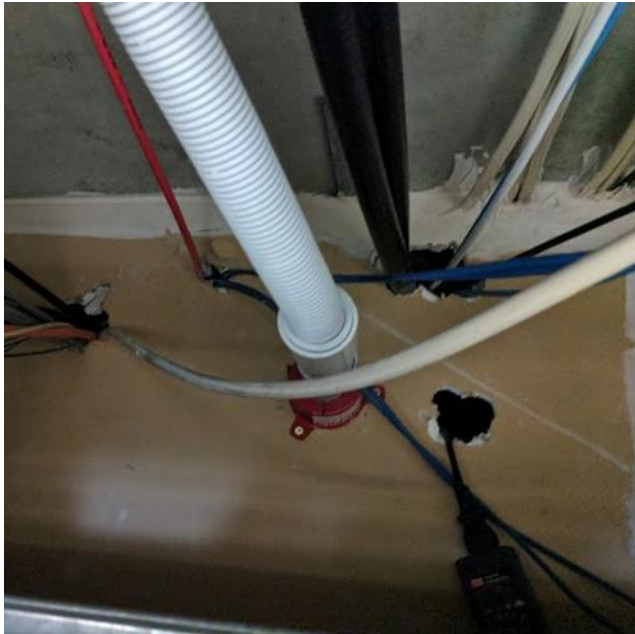




Background

- Tasmanian Fire Service
 - During a recent audit of a major building found 72% of fire safety deficiencies related to non-compliant firewall penetrations.
 - A follow up audit and rectification program conducted on behalf of the PCBU found 200 separate non-compliant penetrations on just 2 levels of an 8 level building.







Room Lower View Non-Sprinklered

NIST



It is all about safety

- How fast does fire & smoke spread?
- How long does it take to evacuate a building?



Problem Areas

- Building work
- Data Comms
- Electrical
- Fire Service Installers
- Mechanical Services
- Plumbing
- Refrigeration & Air-conditioning



Passive Fire Safety

- Passive fire safety is all about time
- National Construction Code requirements
 - depend on class of building
 - Specify time rating required, can be 60, 120 or 240 minutes.



O

How to recognise a Firewall





How to recognise a Firewall

- Does the wall continue to slab or roofline?
- Is it double layer or firestop Plasterboard?
- Is it Masonry?
- Is it Marked? A marked wall is conclusive, an unmarked wall is not conclusive.
- If in doubt, treat it as a firewall.



Think First

- Will other services be required?
- Will the area change in the future?
- How close can penetrations be to each other?
- How will it be compliant?

Think about Future use



BOSS' innovative design for a smoke resistant, flame proof Brush Seal allows fast installation and sealing around services



Achieve the required standard

- Use certified & tested products
- Stay within the limitations
 - Suitable type
 - Within size restriction
 - Stay within the instructions





CONTINUING PROFESSIONAL DEVELOPMENT

Any Questions?



Tasmanian
Government